

# Moscow South Campus

IXcellerate is a leading carrier-neutral data center operator that provides scalability and redundancy for your business growth across two campuses in Moscow.

IXcellerate is a leading commercial data center operator in Russia with 10-year history. We are proud to offer colocation at our new campus: IXcellerate Moscow South. It will unite several data centers across 34 acres (14 ha) starting with Moscow Five (MOS5). Once fully developed, the total power capacity of the campus will exceed 200 MW, ready to house over 20,000 racks. The first phase with 1,200 racks is slated for commissioning in Q4 2021.

IXcellerate data centers are designed to accommodate modern high-load servers and infrastructure for ultra-dense computing in accordance with the Tier III reliability level.

During construction, it is planned to use the best energy-efficient engineering solutions, including carbon embodiment and sustainability through procurement. IXcellerate aims to deliver industry leading design PUE of 1.25 whilst investing in repurposing materials.

Combined with IXcellerate's own Internet exchange platform Eurasia Peering, customers of the IXcellerate Moscow South campus will be able to connect to over 200 networks, enjoying access to a vast digital ecosystem of cloud and technology companies.

**4**

Data centers

**14 ha**

Campus size

**200 MW**

Total power

**50+**

Carriers

# IXcellerate Moscow South campus features



## Location

- Within Moscow metro area
- 27 km to the nearest airport
- Accessible by public transport and inner city trains
- 30 km to the IXcellerate Moscow North Campus
- Less than 9 km distance to MSK-IX



## Power

- MOS5 total power: 50 MW
- 2N UPS power with 99.999% SLA
- Diverse power supply routes from city grid
- Centralized N+1 standby diesel generators



## Physical security

- 6 levels of physical security
- 24/7 dedicated onsite security team
- Non-contact biometric access system
- CCTV with motion detectors
- Airlocks, speed stiles, mantraps
- Strict access and authorization policies and procedures



## Facility

- Data centers: MOS5 (2021), MOS6, MOS7, MOS8
- Total rack capacity: 20,000
- MOS5 rack capacity: 3600
- Project PUE: 1.25
- Hypercloud-ready infrastructure
- Adherence to PCI DSS and Tier III standards



## Cooling

- N+1 redundancy
- Highly efficient cooling systems
- ASHRAE-ready



## Fire suppression

- Early smoke detection system VESDA
- Integrated fire alarm and annunciation system
- Automated HI-FOG® water mist system for localized fire suppression
- Leak detection system

## Sustainable technologies onsite

- Deployment of repurposing materials
- Utilization of excess heat and rain water
- Use of thermal springs and heat pumps
- Highly energy-efficient critical infrastructure
- Waste separation and collection

## Services



### Colocation

- Scalable deployment: from 1 rack to a dedicated data hall up to 500 racks
- Installations in dedicated caged areas and suites (slab-to-slab, roll shutters)



### Customer Support

- 24/7/365 client service desk
- Remote hands
- Zendesk customer portal
- Ticket response time <15 minutes
- Multi-language support
- Customized reports and audits



### Connectivity & Ecosystem

IXcellerate data centers are neutral and offer a fully-fledged ecosystem of telecom operators, system integrators, cloud service providers and internet exchange platforms. We provide value and choice to help our customers meet their strategy by being a one-stop service for any IX and telecom needs.

- Over 50 telecom operators with high-speed Internet access and low latency
- Multiple independent fiber Points of Entry
- Inter- and intra-campus connections
- Meet-me-rooms
- Access to multiple IX platforms, including Eurasia Peering and MSK-IX



### Ultra high power density solutions

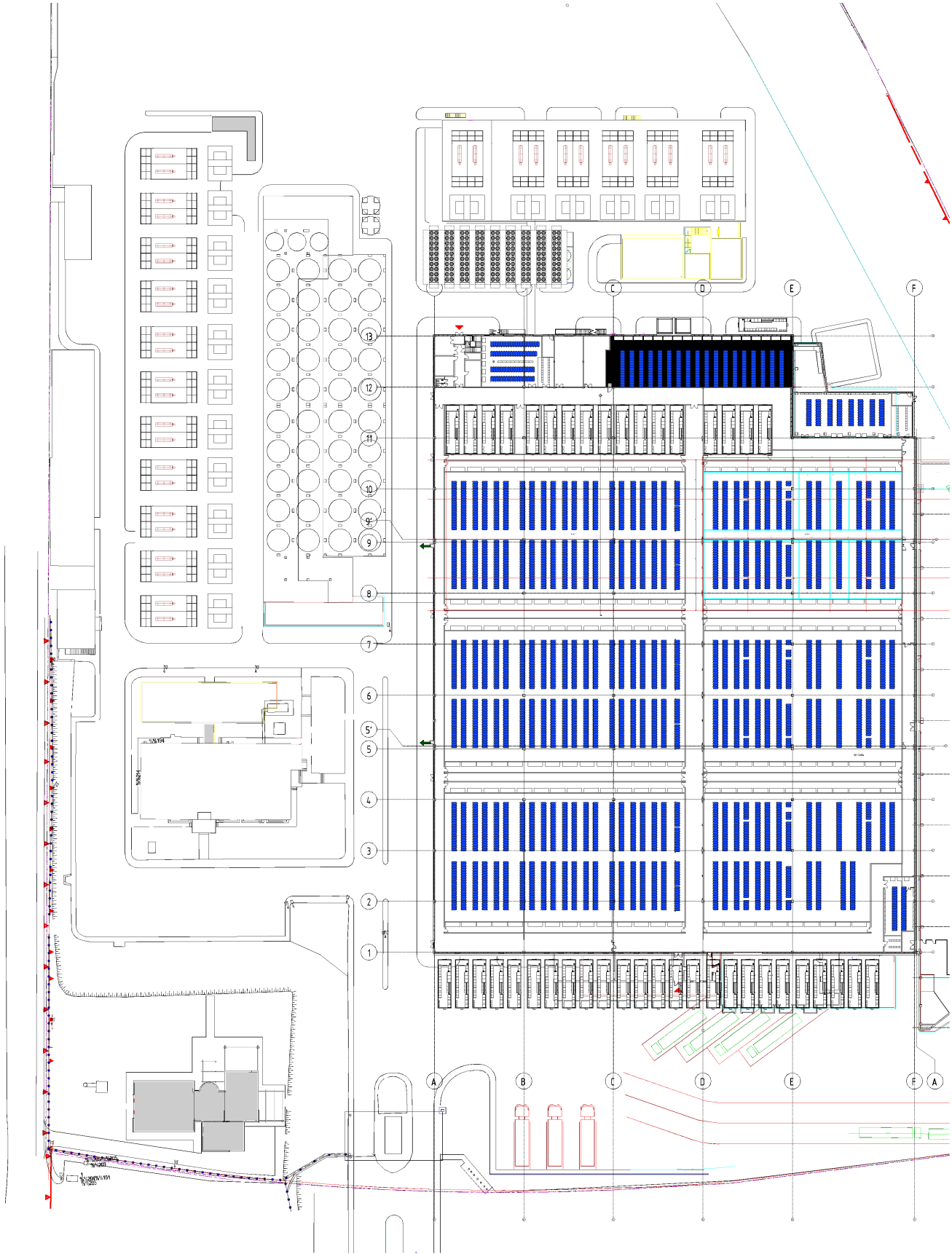
- Up to 30 kW per rack
- Modular design
- Hot aisle containment



### Auxiliary services

- Large office and storage facilities with designated cargo routes and oversized doors
- Protected parking lot
- Disaster recovery office and board rooms
- Fully equipped workplaces for the technical support team

# IXcellerate Moscow South campus map



## We are trusted by



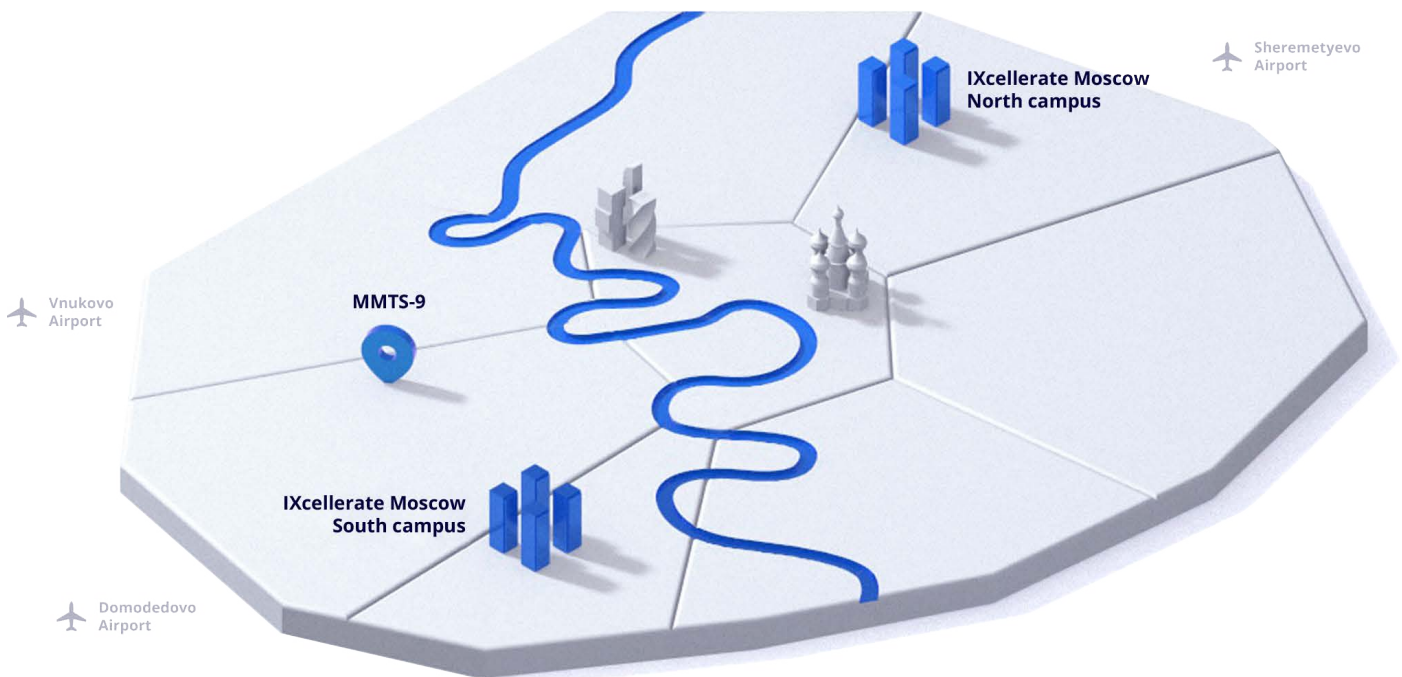
## Facilities

### IXcellerate Moscow North Campus

Data centers: MOS1, MOS2, MOS3 (Q1 2022), MOS4 (2021)  
Total power: 63 MW  
Rack capacity: 5,900

### IXcellerate Moscow South Campus

Data centers: MOS5 (2021), MOS6, MOS7, MOS8  
Total power: 200 MW  
Rack capacity: 20,000



## Contacts

### IXcellerate Moscow North

Altufievskoe shosse 33G, 127410, Moscow

### IXcellerate Moscow South

Podolskikh kursantov 15B, 117997, Moscow

+7 (495) 800-09-11  
info@ixcellerate.ru  
[www.ixcellerate.com](http://www.ixcellerate.com)