



Data Center IXcellerate Moscow Two



*YOUR GATEWAY TO THE
LARGEST INTERNET MARKET
IN EUROPE*

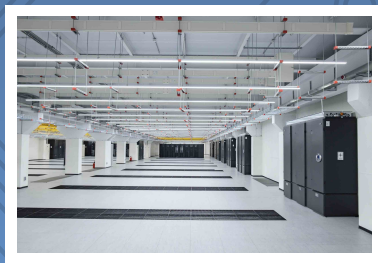
New commercial Tier III data center with outstanding connectivity and reliability.

Data center IXcellerate Moscow Two was officially opened in October 2019, and is a part of the IXcellerate campus, located in the north of Moscow.

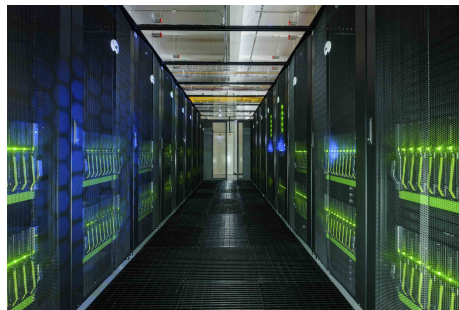
Moscow Two data hall consists of a single, undivided 3000 м² space for colocation of 1480 racks of client equipment. The data hall is designed to prioritize scalable, custom-made solutions for each customer, both in terms of power and cooling.

This is the largest mono-volume data hall in Russia.

Moscow Two ensures SLA of 99.999%, and has one of the best connectivity levels in Russia, providing direct access to more than 50 telco carriers and 20+ system integrators.



IXcellerate Moscow Two data hall



Installation with high-loaded racks

KEY FACILITY FEATURES

- 3000 m² single-volume data hall
- Pure colocation
- 1480 racks (+105 by the end of 2020)
- Rack load: 5KW average with 20KW max
- Project power load: 12 MW (+1.5 by the end of 2020)
- Design PUE: 1.4
- Precision-based Vertiv PDX chillers with EconoPhase™
- N+1 (N+20%) cooling redundancy, where N=5
- 2N power redundancy with customizable options
- Carrier-neutral with 50+ carriers, free 100Gb peering
- 20+ system integrators, 15+ cloud providers
- 750 m² client office areas



IXcellerate Moscow Two conceptual image



IXcellerate campus with two data centers and engineering infrastructure

CONTACT US

Email: info@ixcellerate.ru

Tech support and general info:

+7 (495) 800 0911

IXcellerate Russia

33G Altufievskoe shosse, 127410, Moscow

IXcellerate UK Head Office

53 Davies Street W1k 5JH, London

